



R32窗口式冷氣機(淨冷)

---

# 遙控器 操作說明書

型號:

RC-X7R

RC-X9R

RC-X12R

RC-X18R

**重要提示:**

感謝您購買我們的冷氣機。在操作您的新冷氣機之前，請仔細閱讀本說明書。請務必保存本說明書以供將來參考。



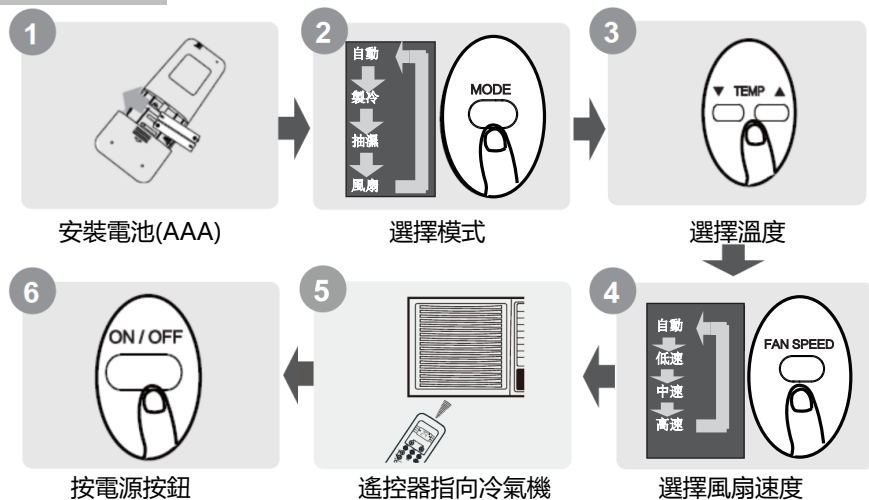
# 目錄

遙控器型號及主要參數.....	2
遙控器的處理.....	3
遙控器各按鈕功能.....	4
遙控器顯示屏介紹.....	5
如何使用基本功能.....	6
如何使用進階功能.....	10

## 遙控器型號及主要參數

型號	RC-X7R, RC-X9R, RC-X12R, RC-X18R
額定電壓	3.0V (兩節 AAA)
信號到達距離	8m
使用條件	-5°C ~ 60°C(23°F~140°F)

### 快速入門指南



### 不確定功能是什麼？

有關如何使用冷氣機的詳細說明，請參閱本手冊的“如何使用基本功能”和“如何使用進階功能”部分。

### 特別說明

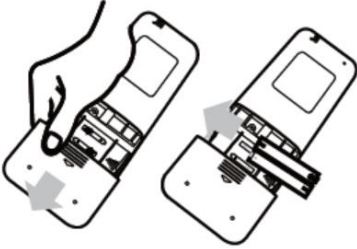
- 本機上的按鈕設計可能與所示示例略有不同。
- 如果室內機沒有特定功能，則按遙控器上的該功能按鈕將無效。
- 如“遙控器說明書”和“使用及安裝說明書”中的功能說明有很大差異，則以“使用及安裝說明書”為準。

## 遙控器的處理

### 安裝和更換電池

您的冷氣機裝置隨附兩枚電池。使用之前，請將電池放入遙控器中。

1. 向下滑動遙控器的後蓋，露出電池盒。
2. 插入電池，注意將電池的 (+) 和 (-) 與電池倉內的符號對齊。
3. 將電池蓋滑回原位。



### ! 注意事項

- 不要混合新舊電池或不同類型的電池。
- 如果 2 個月或更長時間都不再使用遙控器，請取出電池。



### 電池處理

不要將電池作為未分類的垃圾處理。有關正確處理電池，請參閱當地法律。

### 使用遙控器的提示

- 必須在距離冷氣機 8 米以內使用遙控器。
- 收到遙控信號時，冷氣機會發出蜂鳴聲。
- 窗簾，其他物質和直射的陽光會干擾紅外信號接收器。
- 如果遙控器停止使用超過 2 個月，請取出電池。

### 使用遙控器的注意事項

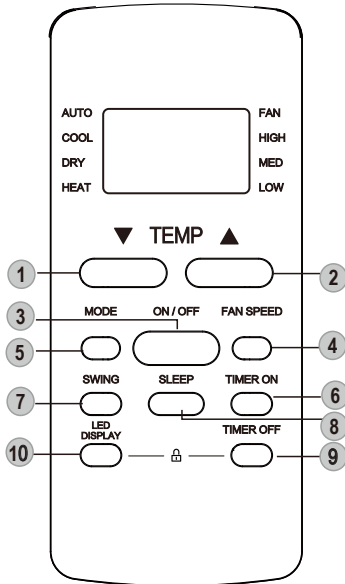
該設備能符合當地國家法規。

在住宅安裝中該設計需提供合理的保護，以防止有害干擾。本設備會產生並使用輻射射頻能量，如果未按照說明進行安裝和使用，可能會對無線電通信造成干擾。但是，不能保證在特定安裝中不會發生干擾。如果此設備確實對無線電或電視接收造成干擾（可以通過打開和關閉設備來確定），用戶可嘗試通過以下一種或多種措施來消除干擾：

- 重新調整或擺放接收天線。
- 增加設備和接收器之間的距離。
- 將設備連接到與接收器不同電路的插座上。
- 請諮詢經銷商或有經驗的廣播/電視技術人員以尋求幫助。
- 未經認可的更改或修改可能會使用戶喪失操作設備的權限。

## 遙控器各按鈕功能

在開始使用新的冷氣機之前，請確保熟悉其遙控器。以下是遙控器本身的簡要介紹。有關如何操作冷氣機的說明，請參閱本說明書的“如何使用基本功能”部分。



### 1、溫度降 ▼ 按鈕

以 1°C (1°F) 的增量降低溫度。最低溫度為 17°C (62°F)。

### 2、溫度升 ▲ 按鈕

以 1°C (1°F) 的增量增加溫度。最高溫度為 30°C (86°F)。

### 3、開/關按鈕

啟動或關閉冷氣機。

### 4、風速按鈕

在以下順序選擇風速：  
自動—低速—中速—高速

### 5、模式按鈕

迴圈操作模式如下：

自動—製冷—抽濕—製暖—送風

**注意**：如果您購買的機器是淨冷型號，請不要選擇製暖模式，淨冷型號不支援製暖模式。

### 6、定時按鈕

設置計時器以開啟設備（請參閱如何使用基本功能指示）。

### 7、擺風按鈕

開始和停止水平送風，葉擺動。

### 8、睡眠按鈕

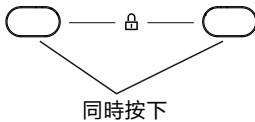
自動調節溫度達至睡眠舒適感。

### 9、定時按鈕

設置計時器以關閉設備（請參閱如何使用基本功能指示）。

### 10、LED 顯示按鈕

打開和關閉室內機的LED顯示屏。

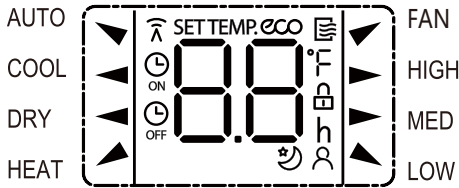


### 注意

同時按下 DIRECT 和 TIMER OFF 按鈕 5 秒鐘以鎖定鍵盤。同時按住兩個按鈕 2 秒鐘以解鎖鍵盤。

## 遙控器顯示屏介紹

當初次安裝電池時，顯示屏會點亮所有信息。



### 模式顯示

- AUTO ▼ 自動模式
- COOL ◀ 製冷模式
- DRY ◀ 抽濕模式
- HEAT ▲ 製暖模式(不適用)
- FAN ▼ 風扇模式



數據傳輸時顯示



遙控器啟動時顯示



設置定時器開啟時間時顯示設置



定時器關閉時間時顯示顯示設置



顯示溫度或房間溫度，



或計時器設置下的時間啟動



表示所有當前設置被鎖定



啟動隨身感功能時顯示(不適用)



啟動睡眠功能時顯示

### 風扇轉速顯示

- ▶ HIGH 高速
- ▶ MED 中速
- ▲ LOW 低速

NO display 自動風速

### 注意：

圖中顯示的所有指標都是為了清楚表述。但是在實際操作期間，在顯示窗口中僅顯示相對功能符號。

## 如何使用基本功能

注意！在操作之前，請確保冷氣機已接通電源。

### 自動模式

選擇自動模式



設置所需溫度



啟動冷氣機



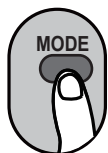
1. 按 MODE 按鈕選擇 **AUTO 自動**
2. 按溫度 ^ 或 v 按鈕設置所需的溫度
3. 按 ON / OFF 按鈕啟動冷氣機

注意：

- 1、在自動模式下，冷氣機根據設置溫度自動選擇製冷或風扇功能；
- 2、在自動模式下，無法調整風速

### 製冷模式

選擇製冷模式



設置溫度



設置風速



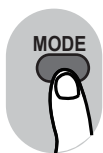
啟動冷氣機



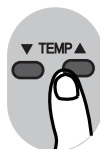


## 抽濕模式

選擇抽濕模式



設置您所需溫度



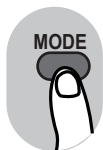
啟動冷氣機



注意：在抽濕模式下，無法調整風速，因為已被自動控制。

## 送風模式

選擇送風模式



設置風速



啟動冷氣機



注意：在風扇模式下您無法設置溫度，而遙控器顯示屏也不會顯示溫度。

## 定時功能設置

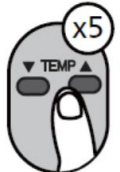
定時開機/關機-設置冷氣機將自動打開/關閉的時間。

### 定時開機設置

按TIME ON按鈕啟動開啟時間序列。



按溫度調節上或下按鈕多次，以設置開啟冷氣機所需的時間。

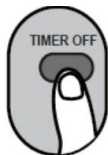


將遙控器指向冷氣機並等待 1 秒鐘，將開啟定時開機功能。

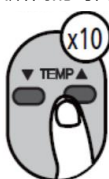


### 定時關機設置

按 TIMER OFF 按鈕啟動關機時間序列。



按溫度調節上或下按鈕多次，以設置關閉冷氣機所需的時間。



將遙控器指向冷氣機並等待 1 秒鐘，將開啟定時關機功能。

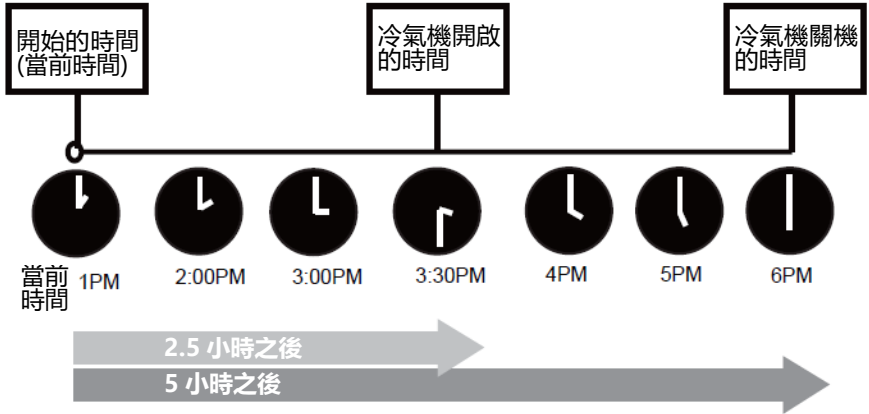
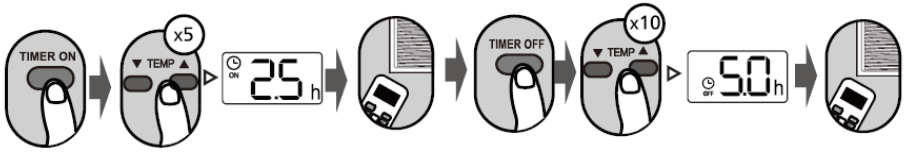


### 注意：

1. 設定 **TIMER ON 定時開機**或 **TIMER OFF 定時關機**時，每按一次，時間將增加 30 分鐘，最多增加 10 個小時。10-24 小時之間，它將以 1 小時為增量增加。（例如，按 5 次獲得 2.5h，然後按 10 次獲得 5h，）計時器將在 24 點後恢復為 0.0。
2. 通過將其計時器設置為 0.0h 來取消此功能。

### 定時器開與關設置 (示例)

請記住，為這兩個功能設置的時間段是指當前時間之後的小時數。



示例: 如果當前計時器為 1:00 PM, 則要按上述步驟設置計時器, 本機將在 2.5h (3:30 PM) 之後打開, 並在 6:00 PM 關閉。

## 如何使用進階功能

### 擺風功能

按擺風 **SWING** 按鈕



按一下 **SWING 搖擺** 按鈕，水平送風葉將自動左右搖擺。再按一次使其停止。

### 睡眠模式



此設定能使人體進入睡眠中，進行溫度上的自動調節，達到睡眠舒適感及較省能源的運轉。

此功能只能經遙控器啟動。睡眠功能在風扇或乾燥模式下不可用。有關詳細信息，請參閱使用及安裝說明書。

## ● 特別聲明

1. 以上資料已經過核對；如有任何印刷錯誤或內容方面的誤解，本公司將保留解釋權。
2. 本產品若有技術方面的改進，新版的操作說明中將會加入有關資料，恕不另行通知。產品外觀及顏色以冷氣機實物為準。
3. 本公司可應要求通過電子郵件發送電子版的用戶指南，請致電信興電工工程有限公司熱線電話2861 2767。

## ● 售後服務

保修期為購買日起計一年。如產品損毀屬正常使用下發生者，本公司可提供免費維修服務。請出示正式收據及蓋有銷售點/換購中心印章的保修證，以享用免費維修服務。如有查詢，請致電信興電器服務中心有限公司熱線電話2406 5666。

**如發生以下任何情況，請立即關閉電源並聯絡信興電器服務中心有限公司。**

- 斷路器經常跳掣或保險絲常被燒斷。
- 水或異物意外進入冷氣機內。
- 冷氣機操作時發出異常聲音。

**Rasonic 樂信牌**



SHUN HING GROUP  
信興集團  
SINCE 1953

**信興電工工程有限公司**

**SHUN HING ELECTRIC WORKS & ENGINEERING CO., LTD**

辦公室: 香港九龍尖沙咀東部麼地道 67 號半島中心 9 樓

OFFICE: 9/F, PENINSULA CENTRE, 67 MODY ROAD, TSIMSHATSUI EAST,  
KOWLOON, HONG KONG

電話 TEL: (852) 2861 2767

傳真 FAX: (852) 2865 6706

網址 WEBSITE: [www.rasonic.com](http://www.rasonic.com)

電郵 EMAIL: [shew@shunhinggroup.com](mailto:shew@shunhinggroup.com)

**保養及維修 MAINTENANCE AND REPAIR SERVICE**

**信興電器服務中心有限公司**

**SHUN HING ELECTRIC SERVICE CENTRE LTD.**

辦公室: 香港新界葵涌勝耀街2號信興中心11樓

OFFICE: 11TH FLOOR, SHUN HING CENTRE, 2 SHING YIU STREET, KWAI CHUNG, NEW  
TERRITORIES, HONG KONG

電話 TEL: (852) 2406 5666

傳真 FAX: (852) 2408 0316

網址 WEBSITE: [www.shesc.com](http://www.shesc.com)

**消耗品/附件銷售熱線 CONSUMABLES/ ACCESSORIES SALES HOTLINE**

電話 TEL: (852) 2406 5666

**客戶服務中心 CUSTOMER SERVICE CENTRES**

香港新界葵涌勝耀街2號信興中心1樓

1ST FLOOR, SHUN HING CENTRE, 2 SHING YIU STREET, KWAI CHUNG, NEW  
TERRITORIES, HONG KONG

電話 TEL: (852) 2406 5439

傳真 FAX: (852) 2408 1389

澳門慕拉士大馬路193-199號南嶺工業大廈5樓1座

AVENIDA DE VENCESLAU DE MORAIS, NO. 193-199, 5 ANDAR-I, EDF. INDUSTRIAL  
NAM LENG, MACAU

電話 TEL: (853) 2836 2928

傳真 FAX: (853) 2833 6405

有關最新之客戶服務中心資訊, 請參閱信興服務中心網址: [www.shesc.com](http://www.shesc.com)或致電維修服務熱線查詢。

For the latest information of customer service centres, please visit [www.shesc.com](http://www.shesc.com) or call us at our hotline.



R32 WINDOW-TYPE  
AIR CONDITIONER(COOLING ONLY)

---

# Remote Controller Operation Manual

Model:

RC-X7R

RC-X9R

RC-X12R

RC-X18R

**IMPORTANT NOTE:**

Thank you for purchasing our air conditioner. Please read this manual carefully before operating your new air conditioning unit. Make sure to save this manual for future reference.





# Table of Contents

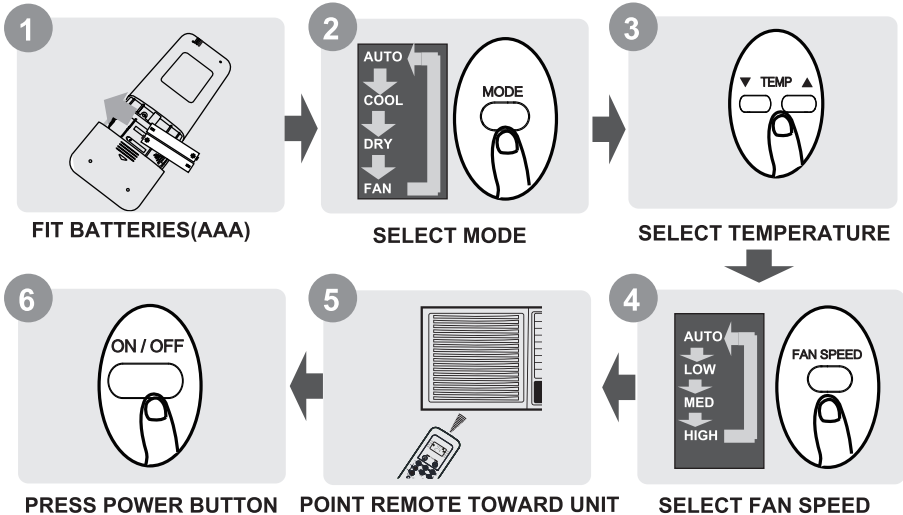
<b>Remote Controller Specifications .....</b>	<b>02</b>
<b>Handling the Remote Controller .....</b>	<b>03</b>
<b>Buttons and Functions .....</b>	<b>04</b>
<b>Remote Screen Indicators .....</b>	<b>05</b>
<b>How to Use Basic Functions .....</b>	<b>06</b>
<b>How to Use Advanced Functions .....</b>	<b>08</b>

# Remote Controller Specifications

Model	RC-X7R, RC-X9R RC-X12R, RC-X18R
Rated Voltage	3.0V(Two dry batteries AAA)
Signal Receiving Range	8m
Environment	-5°C~60°C(23°F~140°F)

3.0V( Dry batteries

## Quick Start Guide



NOT SURE WHAT A FUNCTION DOES?

Refer to the **How to Use Basic Functions** and **How to Use Advanced Functions** sections of this manual for a detailed description of how to use your air conditioner.

## SPECIAL NOTE

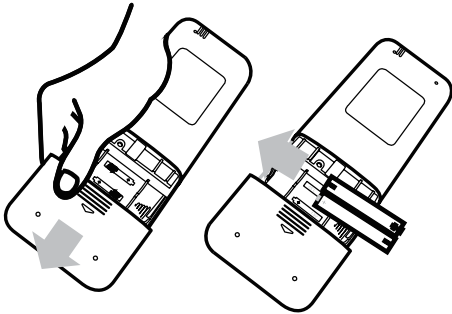
- Button designs on your unit may differ slightly from the example shown.
- If the indoor unit does not have a particular function, pressing that function's button on the remote control will have no effect.
- When there are wide differences between "Remote controller Manual" and "OPERATION AND INSTALLATION MANUAL" on function description, the description of "OPERATION AND INSTALLATION MANUAL" shall prevail.

# Handling the Remote Controller

## Inserting and Replacing Batteries

Your air conditioning unit come with two batteries. Put the batteries in the remote control before use.

1. Slide the back cover from the remote control downward, exposing the battery compartment.
2. Insert the batteries, paying attention to match up the (+) and (-) ends of the batteries with the symbols inside the battery compartment.
3. Slide the battery cover back into place.



## ! BATTERY NOTES

For optimum product performance:

- Do not mix old and new batteries, or batteries of different types.
- Do not leave batteries in the remote control if you don't plan on using the device for more than 2 months.



## BATTERY DISPOSAL

Do not dispose of batteries as unsorted municipal waste. Refer to local laws for proper disposal of batteries.

## TIPS FOR USING REMOTE CONTROL

- The remote control must be used within 8 meters of the unit.
- The unit will beep when remote signal is received.
- Curtains, other materials and direct sunlight can interfere with the infrared signal receiver.
- Remove batteries if the remote will not be used more than 2 months.

## CAUTIONS FOR USING REMOTE CONTROL

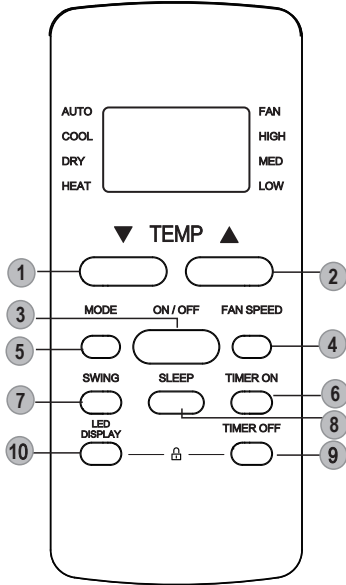
The device could comply with the local national regulations.

These are designed to provide reasonable protection against harmful interference in a residential installation. This equipment generates, uses and can radiate radio frequency energy and, if not installed and used in accordance with the instructions, may cause harmful interference to radio communications. However, there is no guarantee that interference will not occur in a particular installation. If this equipment does cause harmful interference to radio or television reception, which can be determined by turning the equipment off and on, the user is encouraged to try to correct the interference by one or more of the following measures:

- Reorient or relocate the receiving antenna.
- Increase the separation between the equipment and receiver.
- Connect the equipment into an outlet on a circuit different from that to which the receiver is connected.
- Consult the dealer or an experienced radio/TV technician for help.
- Changes or modifications not expressly approved by the party responsible for compliance could void user's authority to operate the equipment.

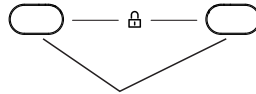
# Buttons and Functions

Before you begin using your new air conditioner, make sure to familiarize yourself with its remote control. The following is a brief introduction to the remote control itself. For instructions on how to operate your air conditioner, refer to the **How to Use Basic Functions** section of this manual.



- 1 **TEMP ▼**: Decreases temperature in 1°C increments. Min. temperature is 17°C(62°F).
- 2 **TEMP ▲**: Increases temperature in 1°C increments. Max. temperature is 30°C(86°F).
- 3 **ON/OFF**: Turns the unit on or off.
- 4 **FAN SPEED**: Selects fan speeds in the following order: **AUTO** → **LOW** → **MED** → **HIGH**
- 5 **MODE**: Scrolls through operation modes as follows: **AUTO** → **COOL** → **DRY** → **HEAT** → **FAN**  
**NOTE**: Please do not select HEAT mode if the machine you purchased is cooling only type. Heat mode is not supported by the cooling only appliance.
- 6 **TIMER ON**: Sets timer to turn unit on (see **How to Use Basic Functions** for instructions).
- 7 **SWING**: Starts and stops the horizontal louver movement.
- 8 **SLEEP**: Saves energy during sleeping hours .
- 9 **TIMER OFF**: Sets timer to turn unit off (see **How to Use Basic Functions** for instructions).
- 10 **LED DISPLAY**: Press this button to turn on and turn off the display on the indoor unit.

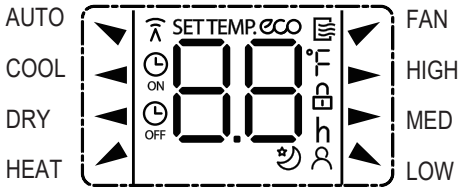
**NOTE**: Press together the two buttons simultaneously for 5 seconds to lock the keyboard. Press together the two buttons for 2 seconds to unlock the keyboard.



Press together simultaneously

# Remote Screen Indicators

Information are displayed when the remote controller is power up.



## Mode display

- AUTO ▼ Auto mode
- COOL ◀ Cool mode
- DRY ◀ Dry mode
- HEAT ▶ Heat mode(not applicable)
- FAN ▼ Fan mode



Displayed when data transmitted.



Displayed when remote controller is ON.



Displayed when TIMER ON time is set



Displayed when TIMER OFF time is set



Shows set temperature or room temperature, or time under TIMER setting



Indicated all the current settings are locked



Displayed when Follow Me feature is activated(not applicable)



Displayed when SLEEP feature is activated

## Fan speed indication

- ▶ HIGH High speed
- ▶ MED Medium speed
- ▶ LOW Low speed
- NO display Auto fan speed

### Note:

All indicators shown in the figure are for the purpose of clear presentation. But during the actual operation, only the relative function signs are shown on the display window.

# How to Use Basic Functions

**! ATTENTION** Before operation, please ensure the unit is plugged in and power is available.

## AUTO Mode

Select AUTO mode



Set your desired temperature



Turn on the air conditioner



### NOTE:

1. In AUTO mode, the unit will automatically select the COOL or FAN function based on the set temperature.
2. In AUTO mode, fan speed can not be set.

## COOL Mode

Select COOL mode



Set the temperature



Set the fan speed



Turn on the air conditioner



## DRY Mode

Select DRY mode



Set your desired temperature



Turn on the air conditioner



**NOTE:** In DRY mode, fan speed can not be set since it has already been automatically controlled.

## FAN Mode

Select FAN mode



Set the fan speed



Turn on the air conditioner



**NOTE:** In FAN mode, you can't set the temperature. As a result, no temperature displays in remote screen.

## Setting the TIMER

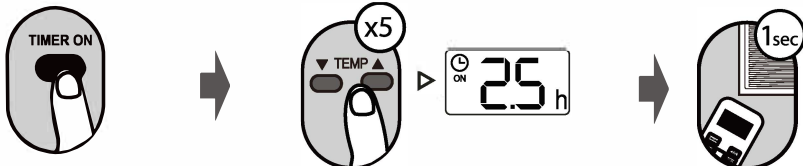
**TIMER ON/OFF** - Set the amount of time after which the unit will automatically turn on/off.

### TIMER ON setting

Press **TIMER ON** button to initiate the ON time sequence.

Press **Temp. up** or **down** button for for multiple times to set the desired time to turn on the unit.

Point remote to unit and wait 1sec, the **TIMER ON** will be activated.

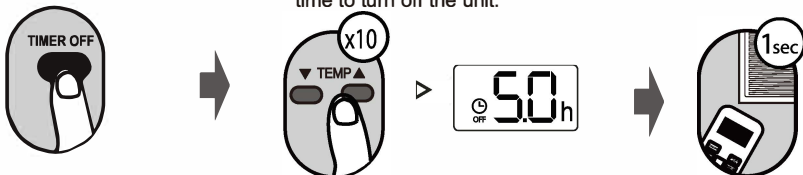


### TIMER OFF setting

Press **TIMER OFF** button to initiate the OFF time sequence.

Press **Temp. up** or **down** button for for multiple times to set the desired time to turn off the unit.

Point remote to unit and wait 1sec, the **TIMER OFF** will be activated.

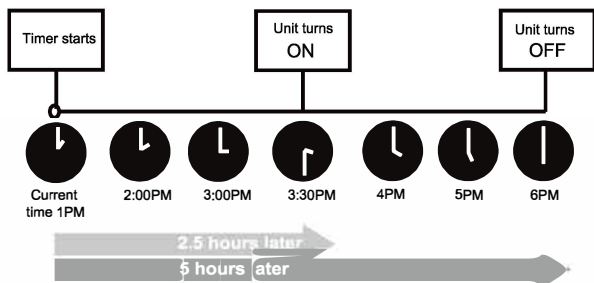
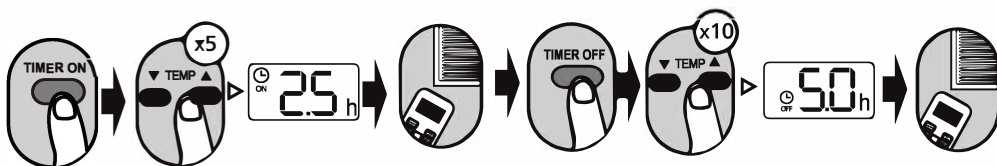


#### NOTE:

- When setting the **TIMER ON** or **TIMER OFF**, the time will increase by 30 minutes increments with each press, up to 10 hours. After 10 hours and up to 24, it will increase in 1 hour increments. (For example, press 5 times to get 2.5h, and press 10 times to get 5h,) The timer will revert to 0.0 after 24.
- Cancel either function by setting its timer to 0.0h.

### TIMER ON & OFF setting(example)

Keep in mind that the time periods you set for both functions refer to hours after the current time.



Example: If current time is 1:00PM, to set the timer as above steps, the unit will turn on 2.5h later (3:30PM) and turn off at 6:00PM.

# How to Use Advanced Functions

## Swing function

Press Swing button



The horizontal louver will swing left and right automatically when pressing Swing button. Press again to make it stop.

## SLEEP function



This setting enables the human body to enter sleep and automatically adjust the temperature to achieve sleep comfort and energy-efficient operation. This function can only be activated via remote control. The sleep function is not available in Fan or Dry mode. Please refer to the OPERATION AND INSTALLATION MANUAL for more details.







## ● Special Avowal

- 1. The information above has been checked; our company reserves the hermeneutic power to any print errors or misunderstanding on the content.**
- 2. Any technology improvement will add into new instruction without any prior notices. The product appearance and color refer to the practical air conditioner.**
- 3. The e-copy of user manual can be sent by e-mail on requested, please call Shun Hing Electric Works & Engineering Co. Ltd. hotline at 2861 2767.**

## ● After sale service

Guarantee period state from the date of purchasing to one year. If the product is damaged under proper use, a free repair service is available. Please present the official invoice and the guarantee certificate with the sales point's chop / redemption center's chop for free maintenance. For enquiries, please contact Shun Hing Electric Service Centre Limited hotline at 2406 5666.

**Turn off the power and contact Shun Hing Electric Service Centre Ltd. as soon as any of the following events occur.**

- The circuit breaker frequently trips or the fuse blows regularly.
- If water or foreign objects have accidentally entered the air conditioner.
- If there is abnormal sound during operation.

**Rasonic 樂信牌**



SHUN HING GROUP  
信興集團  
SINCE 1953

**信興電工工程有限公司**

**SHUN HING ELECTRIC WORKS & ENGINEERING CO., LTD**

辦公室: 香港九龍尖沙咀東部麼地道 67 號半島中心 9 樓

OFFICE: 9/F, PENINSULA CENTRE, 67 MODY ROAD, TSIMSHATSUI EAST,  
KOWLOON, HONG KONG

電話 TEL: (852) 2861 2767

傳真 FAX: (852) 2865 6706

網址 WEBSITE: [www.rasonic.com](http://www.rasonic.com)

電郵 EMAIL: [shew@shunhinggroup.com](mailto:shew@shunhinggroup.com)

**保養及維修 MAINTENANCE AND REPAIR SERVICE**

**信興電器服務中心有限公司**

**SHUN HING ELECTRIC SERVICE CENTRE LTD.**

辦公室: 香港新界葵涌勝耀街2號信興中心11樓

OFFICE: 11TH FLOOR, SHUN HING CENTRE, 2 SHING YIU STREET, KWAI CHUNG, NEW  
TERRITORIES, HONG KONG

電話 TEL: (852) 2406 5666

傳真 FAX: (852) 2408 0316

網址 WEBSITE: [www.shesc.com](http://www.shesc.com)

**消耗品/附件銷售熱線 CONSUMABLES/ ACCESSORIES SALES HOTLINE**

電話 TEL: (852) 2406 5666

**客戶服務中心 CUSTOMER SERVICE CENTRES**

香港新界葵涌勝耀街2號信興中心1樓

1ST FLOOR, SHUN HING CENTRE, 2 SHING YIU STREET, KWAI CHUNG, NEW  
TERRITORIES, HONG KONG

電話 TEL: (852) 2406 5439

傳真 FAX: (852) 2408 1389

澳門慕拉士大馬路193-199號南嶺工業大廈5樓1座

AVENIDA DE VENCESLAU DE MORAIS, NO. 193-199, 5 ANDAR-I, EDF. INDUSTRIAL  
NAM LENG, MACAU

電話 TEL: (853) 2836 2928

傳真 FAX: (853) 2833 6405

有關最新之客戶服務中心資訊, 請參閱信興服務中心網址: [www.shesc.com](http://www.shesc.com)或致電維修服務熱線查詢。

For the latest information of customer service centres, please visit [www.shesc.com](http://www.shesc.com) or call us at our hotline.